

# PERIMETER

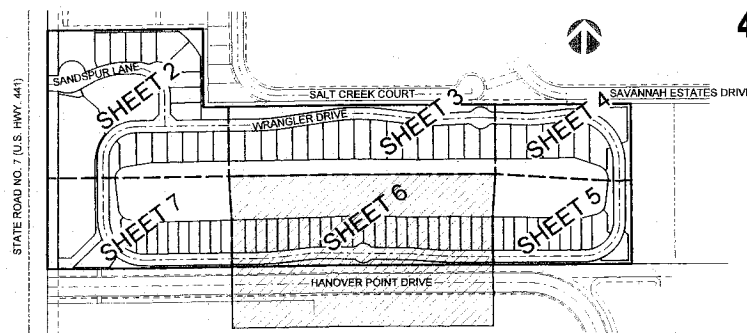
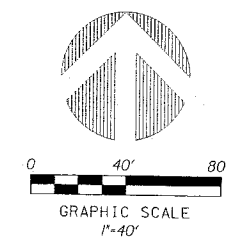
**SURVEYING & MAPPING**  
 Certificate of Authorization No. LB7264  
 Prepared by: Jeff S. Hodapp, P.S.M.  
 949A Clint Moore Road  
 Boca Raton, Florida 33487  
 Tel: (561) 241-9988  
 Fax: (561) 241-5182

## LADERA, P.U.D.

BEING THE SOUTH HALF OF TRACTS 71 AND 72, AND ALL OF TRACTS 73 THROUGH 79, AND ALL OF TRACT 80, LESS THE EAST 183 FEET, AND A PORTION OF THE NORTH 15 FEET OF A ROAD, DYKE AND DITCH RESERVATION, 30 FEET IN WIDTH, LYING SOUTH OF AND PARALLEL TO SAID TRACTS 73 THROUGH 80, BLOCK 43, ACCORDING TO THE PLAT OF "PALM BEACH FARMS COMPANY PLAT NO. 3", AS RECORDED IN PLAT BOOK 2, PAGES 45 THROUGH 54, PUBLIC RECORDS OF PALM BEACH COUNTY, FLORIDA, LYING IN SECTION 7, TOWNSHIP 45 SOUTH, RANGE 42 EAST, PALM BEACH COUNTY, FLORIDA.

JANUARY, 2012

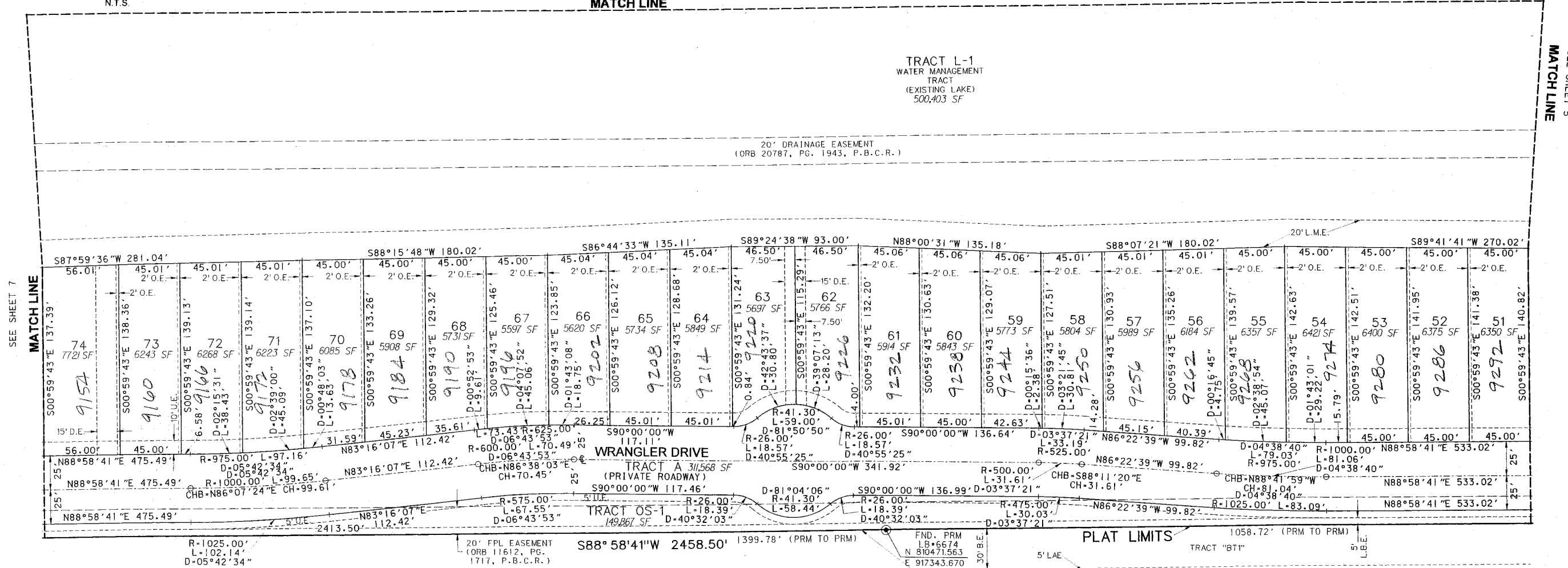
# 54



LOCATION MAP N.T.S.

SEE SHEET 3  
MATCH LINE

SHEET 6 OF 7



SEE SHEET 7  
MATCH LINE

SEE SHEET 5  
MATCH LINE

- LEGEND:**
- SET P.R.M. (UNLESS OTHERWISE NOTED)-4" DIAMETER ALUMINUM DISK IN CONC. MON.
  - STAMPED PRM #LB7264
  - P.C.P. STAMPED P.C.P. #LB7264
  - CENTERLINE
- ABBREVIATIONS:**
- AC. ACRES
  - B.E. BUFFER EASEMENT
  - CH CHORD
  - CHB CHORD BEARING
  - CONC. CONCRETE
  - COR. CORNER
  - D. DELTA (CENTRAL ANGLE)
  - D.E. DRAINAGE EASEMENT
  - I.R. IRON ROD
  - I.R.C. IRON ROD AND CAP
  - ARCLENGTH
  - L.A.E. LIMITED ACCESS EASEMENT
  - L.B. LICENSED BUSINESS
  - L.B.E. LANDSCAPE BUFFER EASEMENT
  - L.M.E. LAKE MAINTENANCE EASEMENT
  - L.M.A.E. LAKE MAINTENANCE ACCESS EASEMENT
  - L.S. LICENSED SURVEYOR
  - L.S.E. LIFT STATION EASEMENT
  - L.W.D.D. LAKE WORTH DRAINAGE DISTRICT MONUMENT
  - O.E. OVERHANG EASEMENT
  - O.R.B. OFFICIAL RECORDS BOOK
  - N.R. NON-RADIAL
  - P.B. PLAT BOOK
  - P.B.C.R. PALM BEACH COUNTY RECORDS
  - P.E. PEDESTRIAN EASEMENT
  - PG. PAGE
  - P.C.P. PERMANENT CONTROL POINT
  - P.O.B. POINT OF BEGINNING
  - P.O.C. POINT OF COMMENCEMENT
  - P.R.M. PERMANENT REFERENCE MONUMENT
  - P.S.M. PROFESSIONAL SURVEYOR & MAPPER
  - P.U.D. PLANNED UNIT DEVELOPMENT
  - R. RADIUS
  - R.L. RADIAL LINE
  - R/W. RIGHT-OF-WAY
  - SEC. SECTION
  - S.F. SQUARE FEET
  - U.E. UTILITY EASEMENT

PLAT LIMITS  
 VALENCIA SHORES - PLAT FOUR  
 (P.B. 99, PGS. 78-91, P.B.C.R.)

HANOVER POINT DRIVE  
 TRACT A  
 (80' PRIVATE RIGHT-OF-WAY)

20' FFL EASEMENT  
 (ORB 11612, PG. 1717, P.B.C.R.)  
 S88°58'41"W 2458.50' 1399.78' (PRM TO PRM)

R-1025.00'  
 L-102.14'  
 D-05°42'34"